

13th European Biennial of Towns and Town Planners 2019

Planning on the edge

IMPROVING FRANCE AND SPAIN CROSS-BORDERS LINKS:

THE URBAN DEVELOPMENT PLAN FOR THE RECOVERY OF CANFRANC INTERNATIONAL RAILWAY STATION

Creating our futures

ECTP-CEU

European Council of Spatial Planners
Conseil européen des Urbanistes

Beatriz Santos & Raquel Aragón

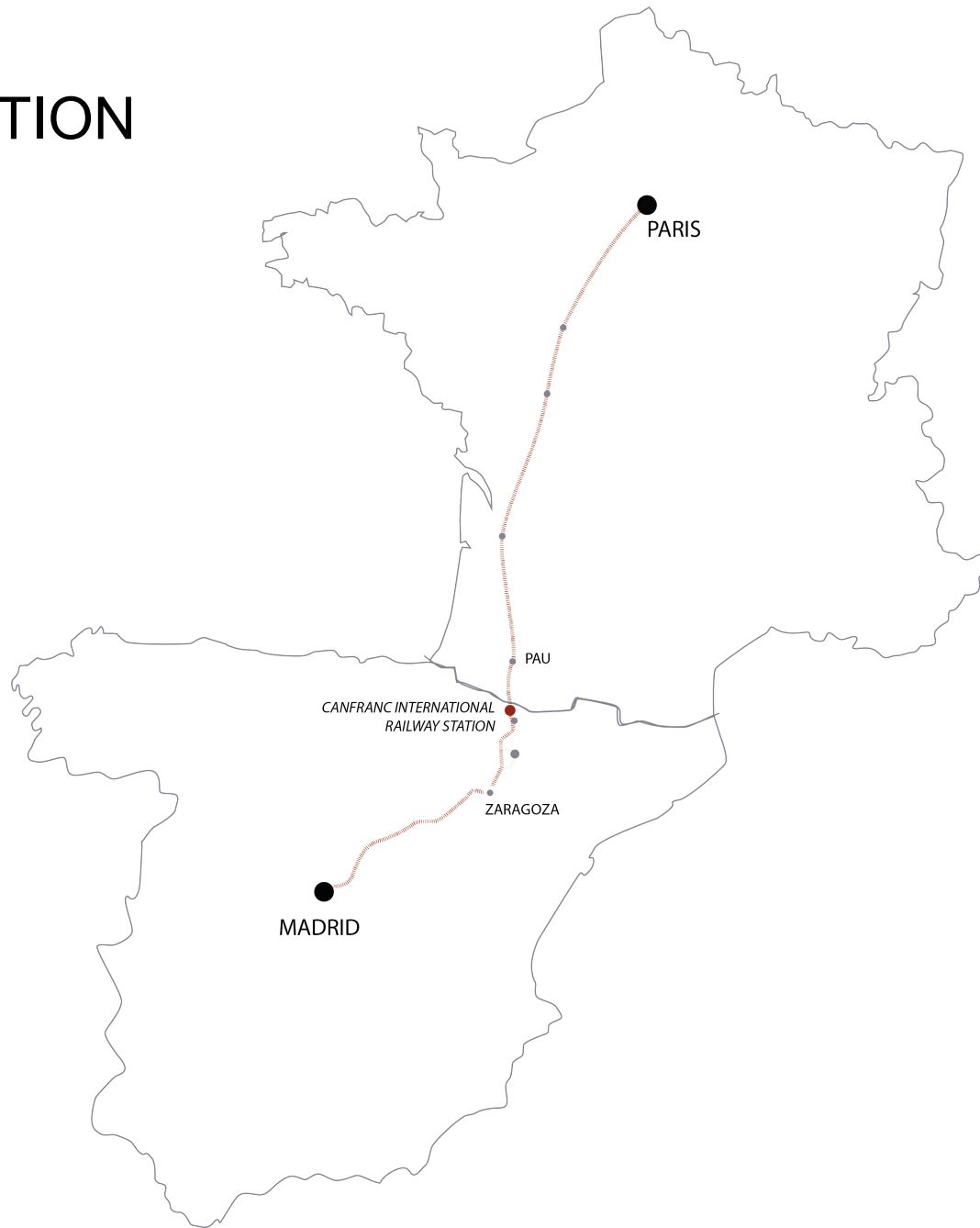
Young Planners Workshop

© Foto: David Ibáñez

INDEX

1. INTRODUCTION
2. CONTEXT
3. CANFRANC INTERNATIONAL RAILWAY STATION COMPLEX
4. ANALYSIS
 1. THE URBAN DEVELOPMENT PLAN
 2. CULTURAL HERITAGE AND TOURISM
 3. NATURAL RESOURCES, LANDSCAPE AND LEISURE ACTIVITIES
5. CONCLUSIONS

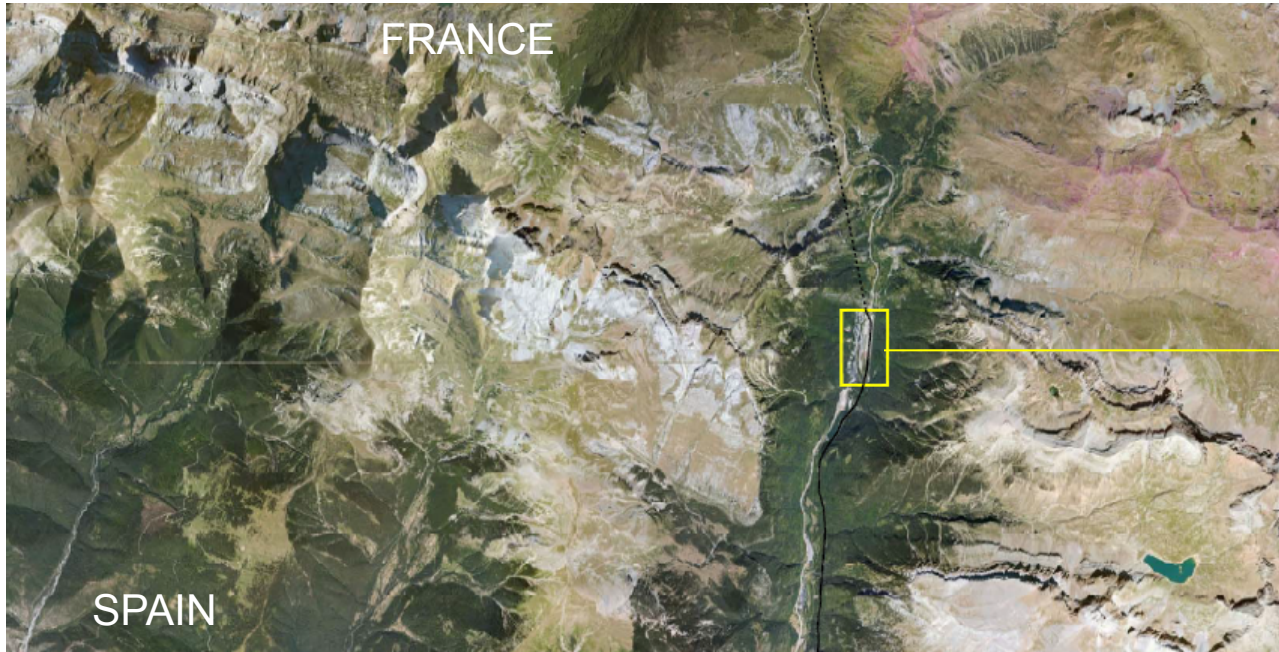
INTRODUCTION



INTRODUCTION



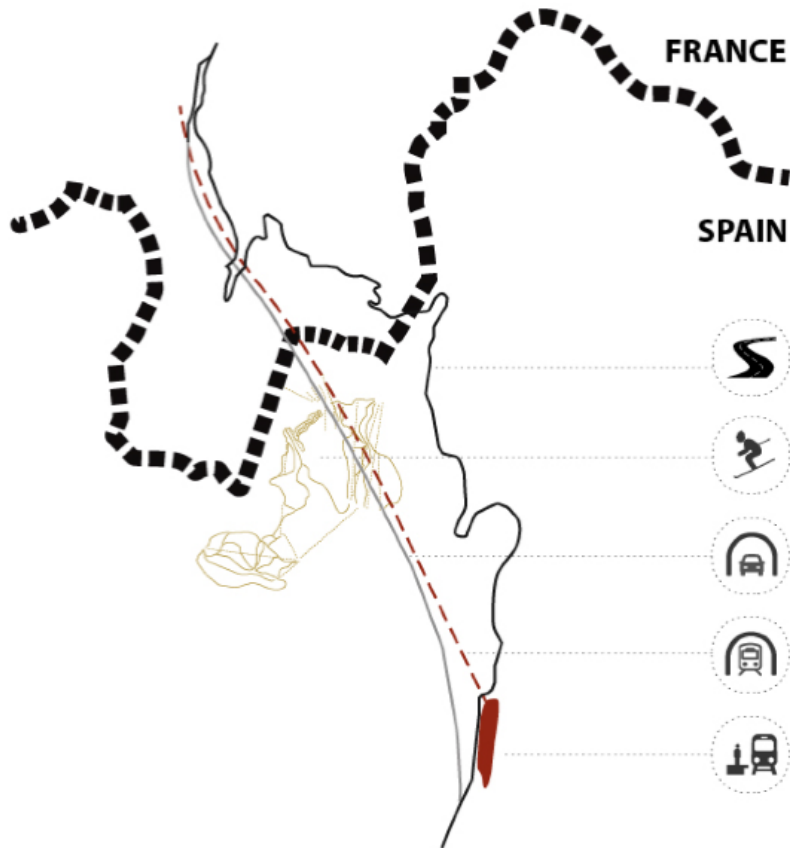
LOCATION



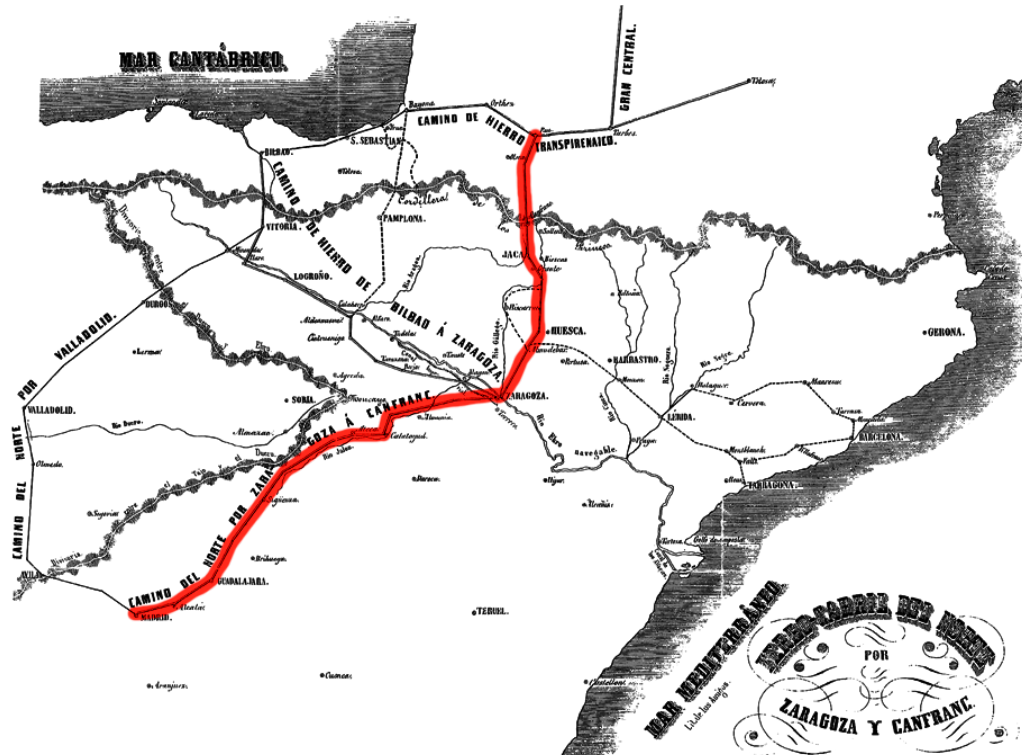
LOCATION



CONTEXT

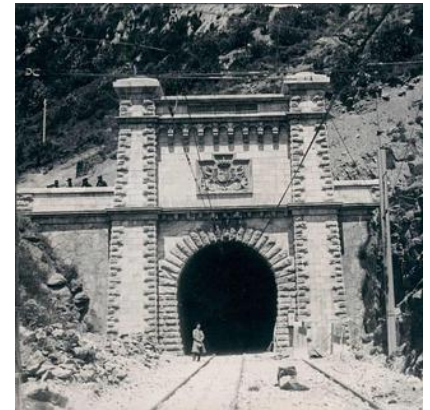
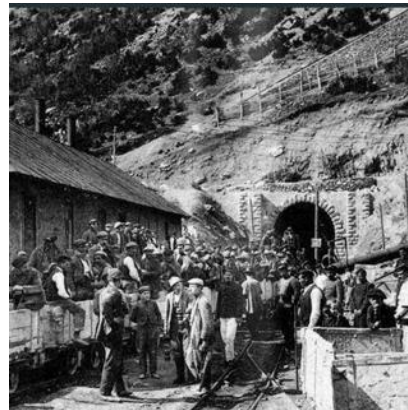
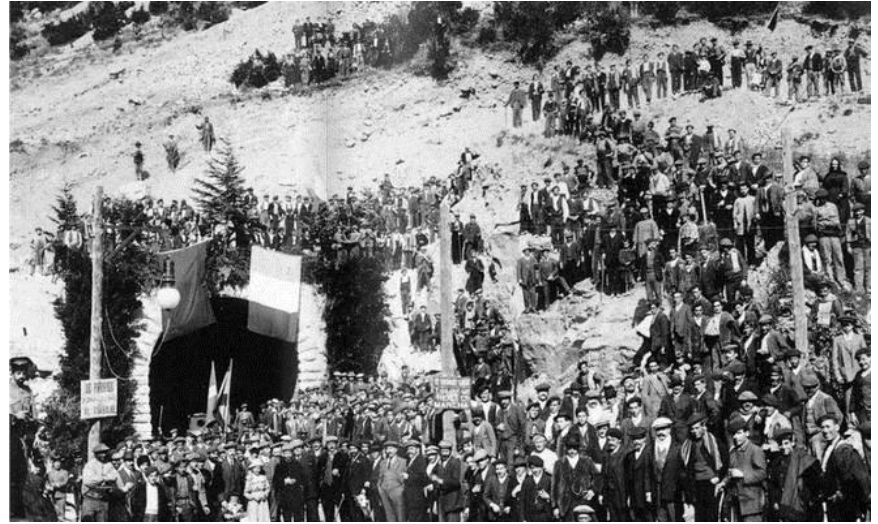
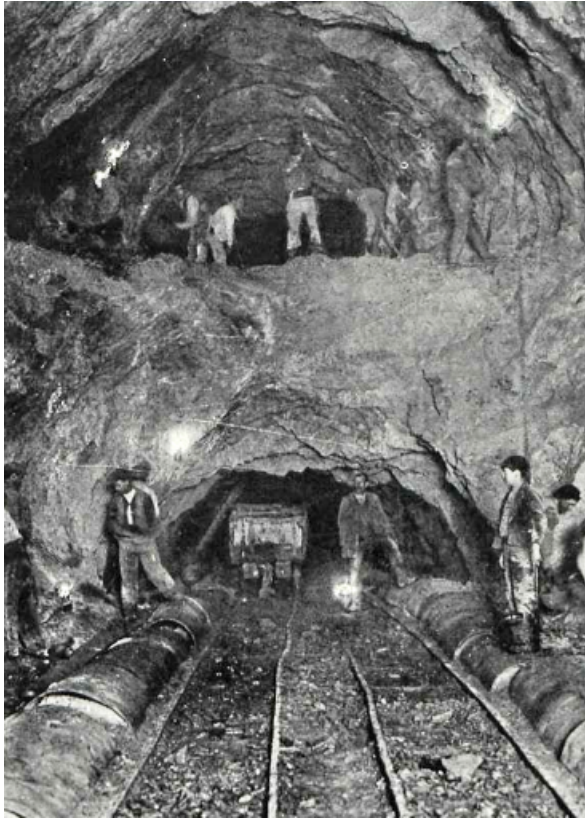


CONTEXT



Old railway scheme. Mid 30s

CONTEXT



Tunnel Works 1908 - 1914

CONTEXT



Works almost finished. Main building

CONTEXT



July 1928

Official opening



1928 - 1940

Operational period

1944 - 1970



March 1970

Estanget Bridge accident

Closure of the railway line

CANFRANC INTERNATIONAL RAILWAY COMPLEX



General view, mid 20s



General view, mid 40s

CANFRANC INTERNATIONAL RAILWAY COMPLEX



Current view

CANFRANC INTERNATIONAL RAILWAY COMPLEX

MAIN BUILDING (INTERNATIONAL STATION)



CANFRANC INTERNATIONAL RAILWAY COMPLEX



FRENCH RESIDENCE



STATION BUILDING



ENTRANCE PAVILLION



TRAIN SHED



CURVED WAREHOUSE



FRENCH PLATFORM



HANGAR



POSTAL PAVILLION

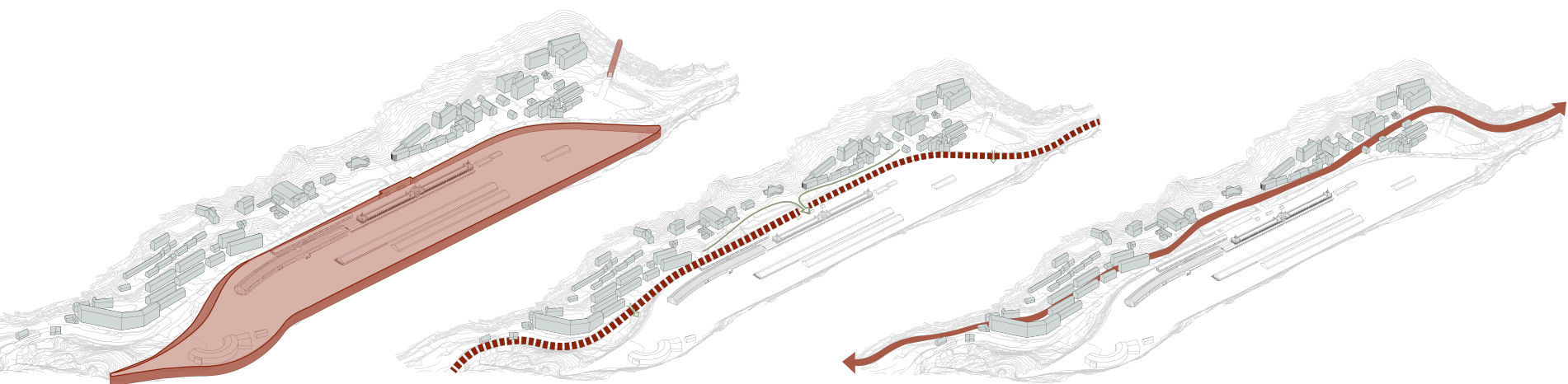


SPANISH RESIDENCE



LOCOMOTIVE WAREHOUSE

ANALYSIS



Platform and tunnel

Aragon River

Road

URBAN DEVELOPMENT PLAN

Objetives

Ensure railway services

Preserve and refurbish all the existing buildings

Enable urban land uses: housing, leisure, services

Preserve the collective memory of the space

Design walks and pedestrian routes connecting with natural paths

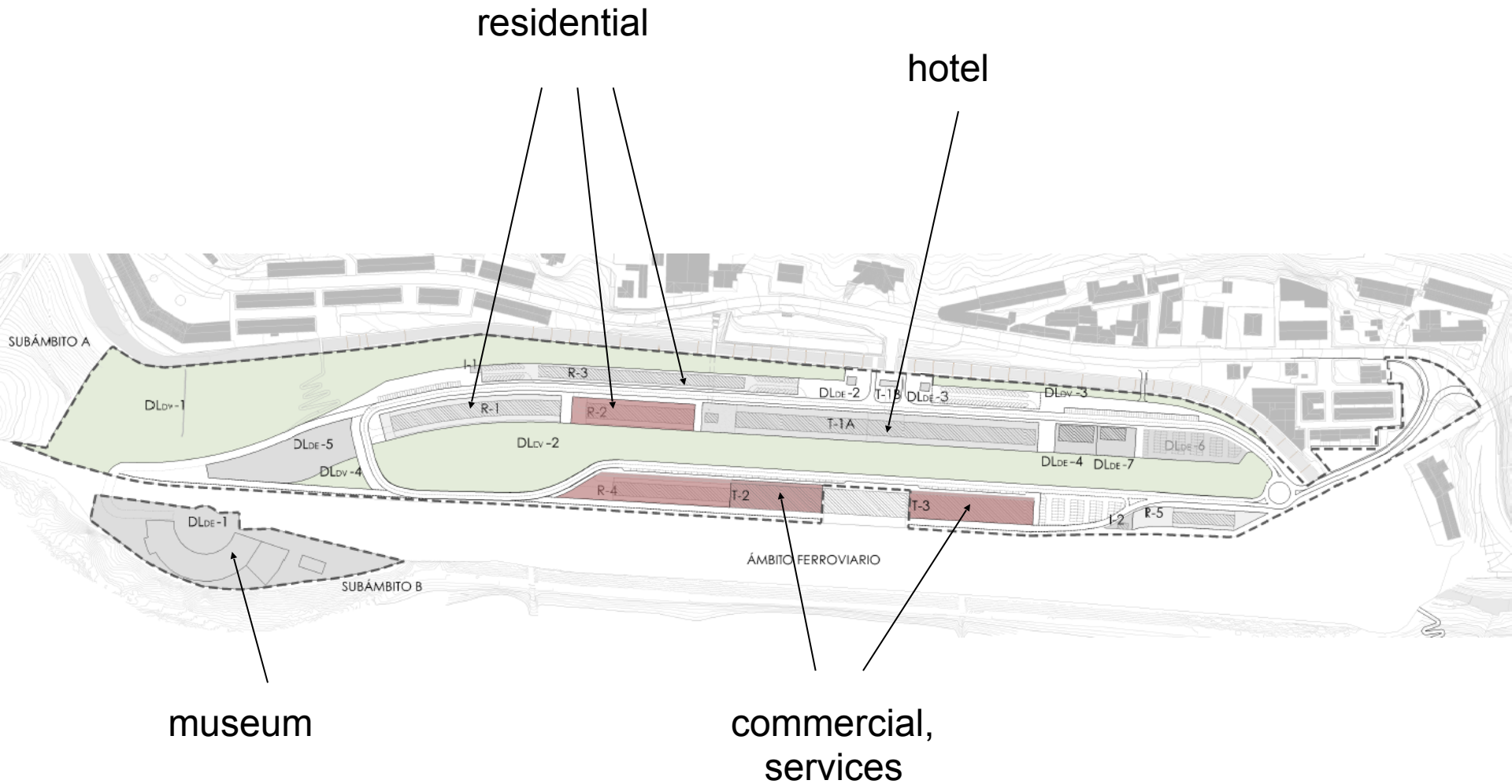
Turn the central space into a real main square for the citizens

ANALYSIS



Railway area

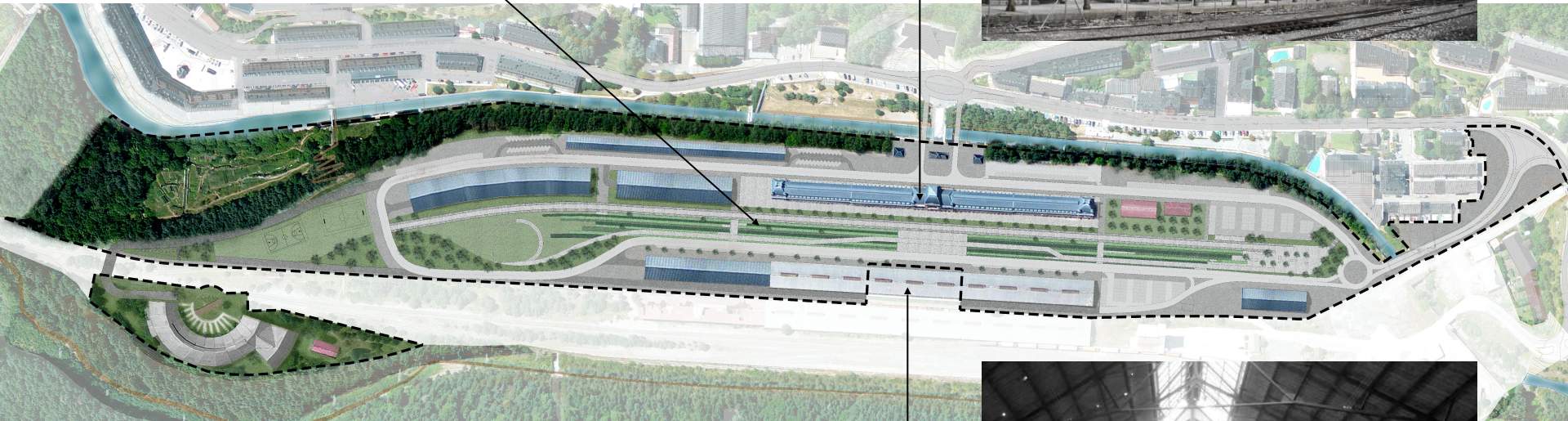
URBAN DEVELOPMENT PLAN



PROPOSAL

Public space

New hotel



New railway station

CULTURAL HERITAGE AND TOURISM



Industrial heritage

CULTURAL HERITAGE AND TOURISM



Guided tours

450 tours in summer

French tours (Sundays)

7.500 people in July 2019

45.000 visitants in 2017, 10% annual increase

10% foreigners



CULTURAL HERITAGE AND TOURISM



Camino de Santiago (Route through Aragon)

CULTURAL HERITAGE AND TOURISM

Specific project

Information and Interpretation centre of the Camino de Santiago



French Residence's façade last year



French Residence's currently

NATURAL RESOURCES AND LANDSCAPE



Walking trails



Mountain races

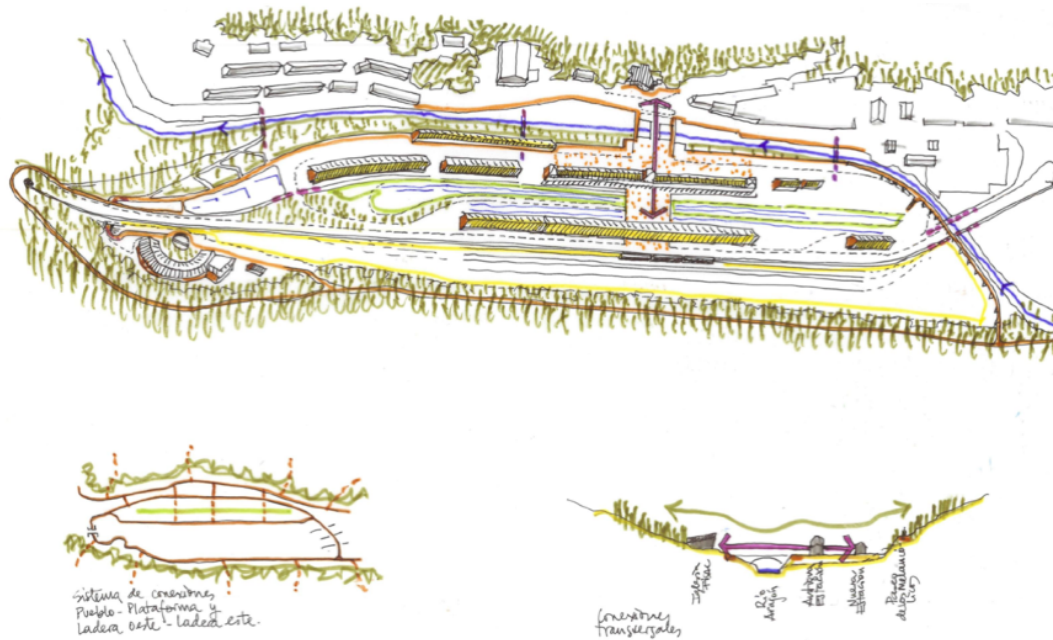


Hiking



Skiing

NATURAL RESOURCES AND LANDSCAPE



Connections and walks

FUTURE



FUTURE



CONCLUSIONS

Opportunities



Ensure railway services and also promote the international connection

High local impact: strength the economy based on services and tourism

Develop urban nucleus providing new residential area and public spaces

Slow down depopulation of this remote area of the Pyrenees

Difficulties



Achieve agreements between European countries

Get the necessary investment and support

Dissemination of the project

Thank you!!!