

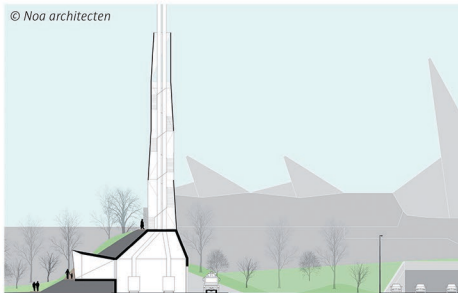
Nieuw Zuid, Antwerp

Living in a sustainable quarter

Nieuw Zuid is unique in Belgium because it translates sustainability on the level of an entire residential quarter. A heat network of this size that serves a comparable mix of functions is nowhere else to be found. Thus Nieuw Zuid is a pioneering project, and its implementation has been a key concern from the very start of the planning process. As a result, today a new neighbourhood arises that helps the city to realise its climate goals and allows the developer to promote a project with substantial added value, commercially as well as financially.

Building for the combined heat and power plant.

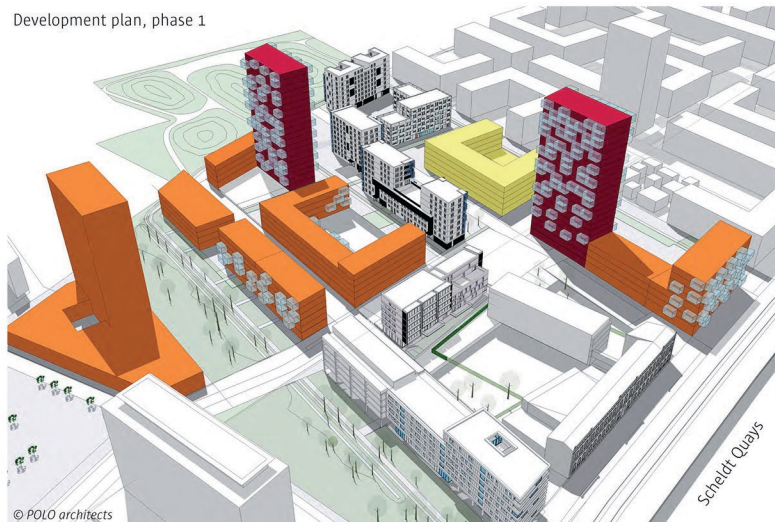
© Noa architecten



© Noa architecten

The design for the combined heat and power plant (CHP plant) was selected by means of a contest. The building is to become an important icon for the quarter, but will have an educational function as well.

Development plan, phase 1



© POLO architects



© Atelier Kempe Thill

With a view to strong direction and coordination, a more detailed development plan is elaborated for each phase. This plan ensures a controlled, coherent and coordinated development, conform to the master plan. It provides insight into volumes, the programme, spatial accounting, the parking balance ...

Timing

2010

- Cooperation agreement between city and developer

2011

- Approval of climate plan
- Selection of Studio Associato Secchi-Vigano to elaborate the master plan for Nieuw Zuid
- Participation moment

2012

- Feasibility study for the heat network
- Decision to create the heat network
- Approval of the master plan for Nieuw Zuid
- Detailed development plan for phase one

2013

- Start of elaboration of spatial execution plan
- Start of elaboration of the design of public space by Bureau Bas Smets
- Information moment
- Contest for social housing construction
- Selection of designer for CHP plant
- Concession of the construction and maintenance of the heat network
- Start of construction of first block

2014

- Design contest for three tower buildings
- Final approval of the spatial execution plan
- Start of development of public space
- Start of building works for social housing and CHP plant
- Start of trajectory of guidance (Flemish subsidy)



The city organises a trajectory of guidance in its endeavour to give a central role to participation and consultation with stakeholders. This way the city wants to contribute to a Nieuw Zuid 'culture' where residents, visitors and users subscribe to the sustainability ambitions.



Impression of the first buildings to be built at Nieuw Zuid

© BOB351 architecten